

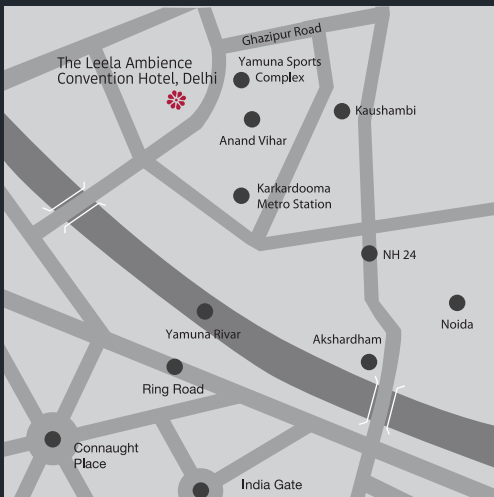


THE LEELA

AMBIENCE DELHI
CONVENTION HOTEL



The Leela Ambience Convention Hotel, Delhi is located in close proximity to Delhi's most famous places of interest and offers convenient getaway access to Agra and the hills of North India. With 70,000 sq.ft. of meeting and banqueting spaces, including 23,970 sq.ft. of pillar-less ball room, it is one of the largest Convention and Wedding venues in India. Welcome to the new capital hotel of Old Delhi.



The Leela Ambience Convention Hotel, Delhi
 1, CBD, Maharaja Surajmal Road, Near Yamuna Sports Complex, Delhi - 110032 India
 tel: +91 11 4908 8869, fax: +91 11 4908 8889
 e mail:reservations@theleela.com

TRANSPORTATION

International Airport: 25 Kms.
 Metro Station: 1 Km. (Karkardooma and Mansarovar Park)
 New Delhi Railway Station: 11 Kms.

PLACES OF INTEREST

Akshardham Temple
 Buddh International Circuit F1 Grand Prix Track
 India Gate
 Qutab Minar
 Red Fort
 Few hours drive to the Taj Mahal, Agra & the Pink City, Jaipur

CLIMATE

In summer, the min is 21°C and the max is 48°C
 In winter, the min is 0.4° C and the max is 33° C

GENERAL INFORMATION

Languages: English, Hindi
 Currency: Indian Rupee
 All major credit cards accepted

RESERVATIONS & INFORMATION

THE LEEA PALACES, HOTELS AND RESORTS

GDS CHAIN CODE: LR

THE LEEA AMBIENCE GURGAON RESERVATIONS

91 124 477 1177

www.theleela.com

PREFERRED HOTELS AND RESORTS

TOLL FREE

CANADA/USA

1 800 323 7500

Austria, Denmark, France, Germany, Italy, The Netherlands, Spain, Sweden, Switzerland and UK

00800 32375001

Australia

1 800 134 271

Hong Kong, SAR

800 96 3365

Japan

0120 984 450

Singapore

1 800 227 3126

Taiwan

00801 65 1254

PHG WORLDWIDE TOLL

NUMBER

1 817 567 9633

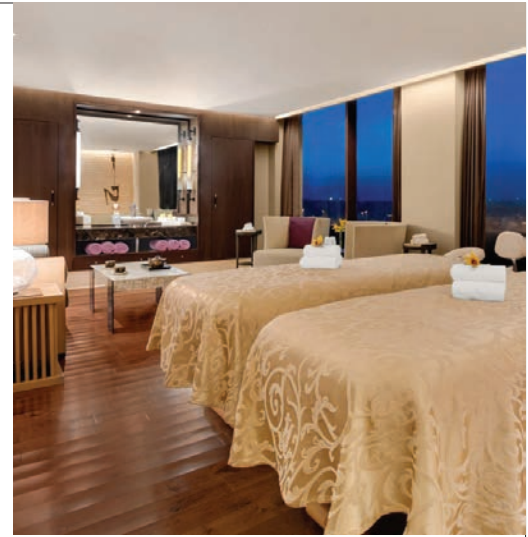
www.preferredhotels.com



THE LEEA

AMBIENCE DELHI
 CONVENTION HOTEL

The Leela Palaces, Hotels and Resorts: New Delhi, Bengaluru, Chennai, Mumbai, Gurgaon, Udaipur, Goa and Kovalam.
 Upcoming Hotels: Jaipur; Agra; Lake Ashtamudi (Kerala); Bhartiya City, Bengaluru and Lucknow.



Facilities & Services

Accommodation

- Total number of suites and rooms - 480
- 409 Premier rooms
- 46 Premier rooms with balcony
- 12 Executive suites
- 12 Deluxe suites
- 1 Presidential suite

Guestroom Amenities

- Triple play technology on fibre throughout the Hotel
- Conference & Meeting facilities
- Outdoor party lawn
- Luxury cars on hire
- Video conferencing
- Webcasting
- Business centre
- Laundry & dry cleaning
- Doctor on call
- Parking for 1100 cars with valet services
- Highly secure premises

Guestroom Services

- 24 hour in-room dining
- High speed wireless internet connection
- In-room bar
- Tea and coffee maker
- Bedside master control for lights
- Separate work desk
- DVD player & movies on request
- IP phones & interactive TV
- In-room electronic safe
- Daily newspaper
- Pillow Menu

Dining

- Café Knosh - Gourmet all-day dining. Offers exotic Mediterranean and Indian delicacies in an elaborate a-la-carte menu along with an exhaustive buffet for breakfast, lunch and dinner.
- Dilli 32 - Opulent Indian Dining. The restaurant salutes the spirit of Awadhi and Mughal cuisine where chefs create excitement with live preparations on tandoors, tawas, handis and parats.
- Mei Kun - Asian Multi Cuisine. The restaurant serves delicious and authentic South East Asian flavours and has a Live Grill that prepares exotic preparations.
- Cherry Bar - The hangout lounge. Cherry Bar is an elegant, comfortable and eclectic bar to unwind and enjoy relaxed evenings.

Conference & Banquet

Facilities

- Grand Sapphire Ballroom divisible into 5 parts with pre-function areas. Adjoining Emerald Ballroom with a pre-function area.
- 3 meeting rooms and 2 boardrooms
- 4 outdoor Lawns

Spa and Fitness

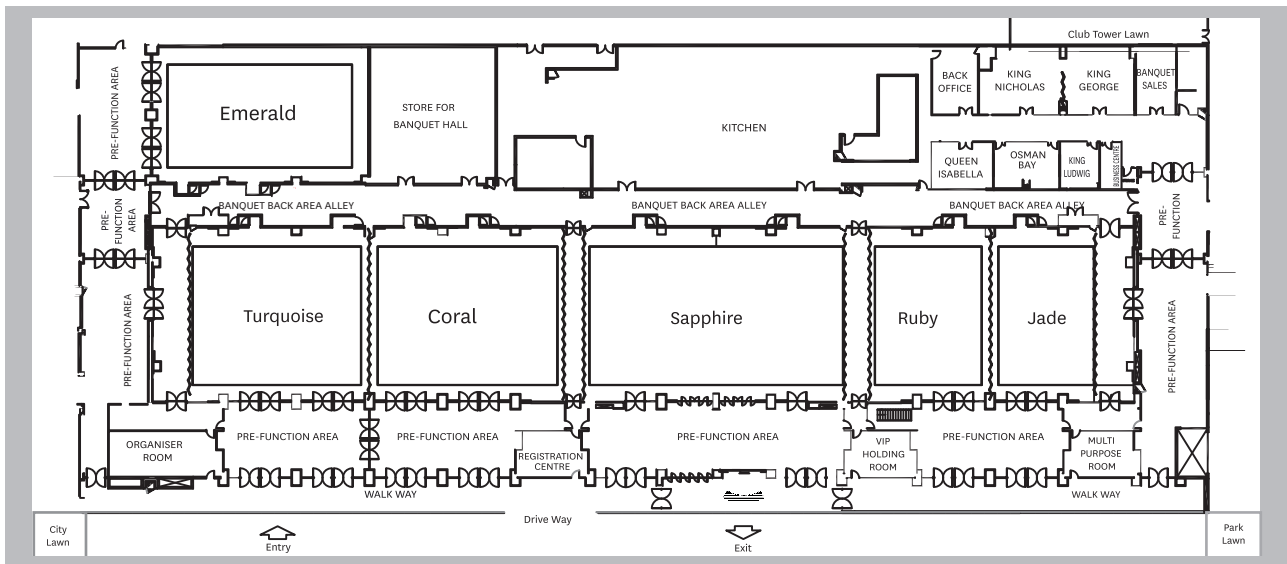
- Shanaya, the luxurious spa, specialises in Asian and European therapies besides offering healing Ayurvedic treatments. Choose from a range of body scrubs and wraps, steam and sauna bath along with Hammam treatment and Ice fountain experience.
- Well-equipped fitness centres - Park Club in Club Tower and City Club in Hotel Tower
- Techno Gym cardiovascular equipment
- Outdoor temperature-controlled swimming pool
- Yoga Deck on Level 5

Special Features

- Shanaya, the salon. The modern salon provides expertise in hair care, trendy and stylish haircuts, hair styling, advanced make-ups and many other facilities like comfortable hair wash stations, pedicure and manicure stations along with a bridal room.
- Florist on request
- Sight seeing tours
- Currency exchange



Banquets & Meeting Rooms Floor Plan



VENUE	AREA SQ. FT.	DIMENSIONS L x W x H	THEATRE STYLE	CLASS ROOM	U-SHAPE	BOARD ROOM	CLUSTER	SIT DOWN	COCKTAIL
Grand Sapphire Ballroom	24497	374 x 65.5 x 18	3600	1400	500	500	1200	1200	5000
Pre Function Area (Gr. Sapphire)	18800								
Jade	2232	39.5 x 56.5 x 18	200	144	50	60	126	120	175
Ruby	2458	43.5 x 56.5 x 18	200	168	50	60	126	120	175
Sapphire	5424	96 x 56.5 x 18	950	360	100	100	350	360	700
Coral	3944	70 x 56.5 x 18	650	260	70	80	250	240	350
Turquoise	3447	61 x 56.5 x 18	650	240	80	90	220	220	350
Emerald Room	3255	77.5 x 42 x 18	300	220	70	70	190	168	324
Pre Function Area (Emerald)	1320								
Pre Function Area (Meeting)	244								
King Nicholas	611	26 x 23 x 10	50	24	16	20			
King George	611	26 x 23 x 10	50	24	16	20			
Queen Isabella Board Room	377	25 x 15 x 10				8			
Osman Bay	377	25 x 15 x 10	40	24	15	18			
King Ludwig Board Room	183	12 x 15 x 10				6			
Park Lawn	4600								300
City Lawn	3200								200
Frangipani Lawn	2150								100
Club Tower Lawn	8400								500
Total	61633								

* NOTE: • Classroom Seating- Rectangular table 6ft x 2.5 ft, 3 pax/table • Cluster Style seating- Round table 5ft. diameter, 5-7 pax/table • Sit Down Seating • Round table 6ft. diameter, 8 pax/table • These capacities are excluding stage, audio and other requirements. (Maximum Capacity)